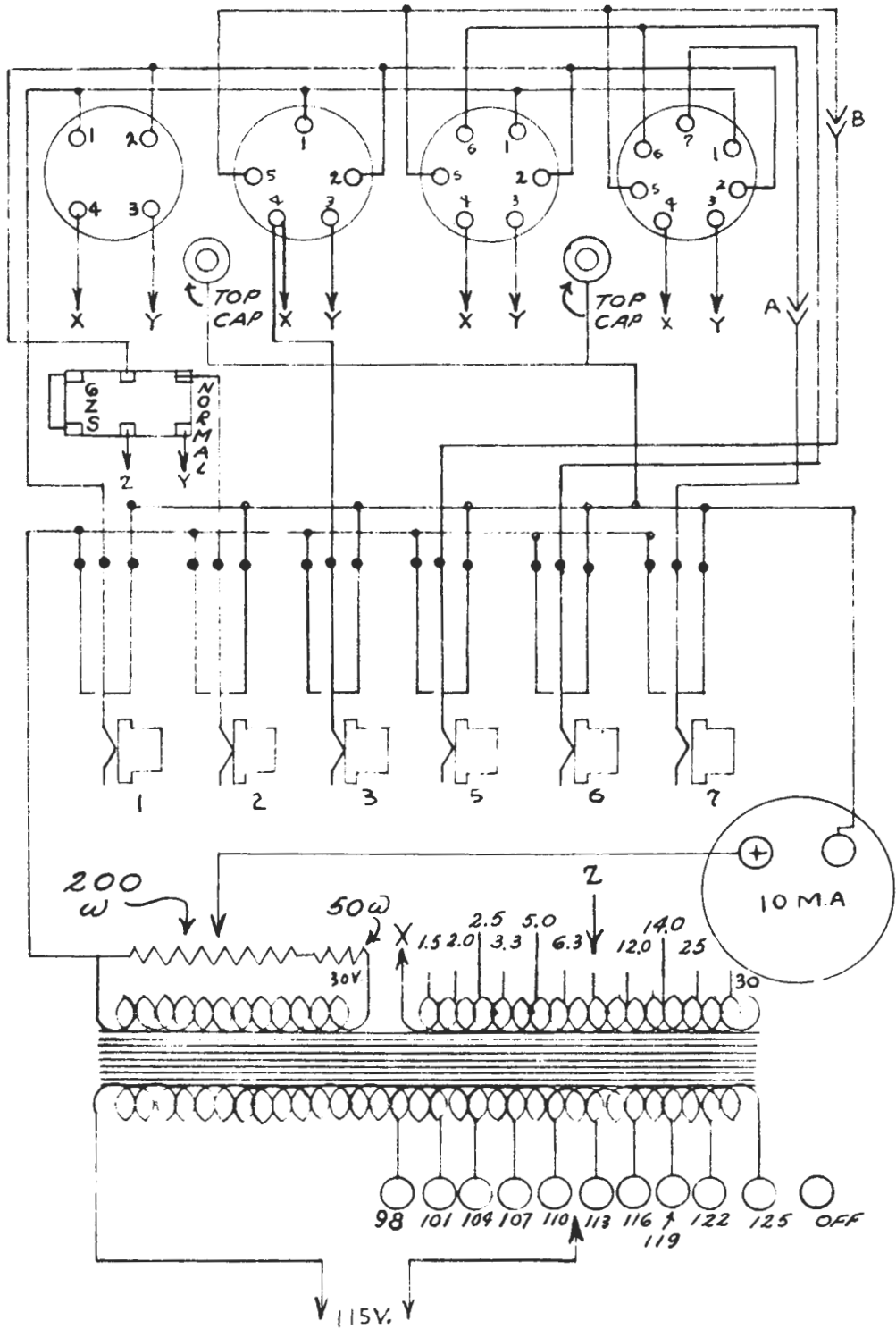


SUPREME INSTRUMENTS CORP.

Switch A Normally closed, open for 12 25 Tube  
Switch B Normally closed, open for 12 A5 Tube



**SUPREME INSTRUMENTS CORP.**  
GREENWOOD, MISS

May 21st, 1934

**782A**

Schematic Diagram  
Model 35

DRAWN & TRACED  
G. BALLELO

CHECKED  
W.B. MURPHY

APPROVED  
Ray Stewart



**[www.StevenJohnson.com](http://www.StevenJohnson.com)**

**Antique Technolgy, Tube Radios and Test Equipment  
Vintage Schematics, and Publications**

**Steve's Antique Technology**